

PLATE Ref: No.	PART NO.	QUANTITY					STEERING		DESCRIPTION	CHANGE POINT	BULLETIN
		ALL	T/C	T/C Fed.	Special	Spec. Fed.	LH	RH			
	V026 E 0701W	1						*	Engine Assembly.		
	Y026 E 0701W	1						*	Engine Assembly.		
	R026 E 0701W				1			*	Engine Assembly.		
	Z026 E 0701W				1			*	Engine Assembly.		
	S026 E 0701W			1		1			Engine Assembly.		
	A026 E 0700S	1							Short Engine Assembly. comprising:		
	C026 E 0708S	1							Cylinder Block.		
	X026 E 0384Z	1							Retainer.		
	A026 E 6032Z	1							Plug. Water Drain,		
	A026 E 6031Z	2							Plug. Oil Gallery,		
	B026 E 0330Z	1							Crankshaft.		
	X026 E 0015Z	1							Sprocket. Crankshaft,		
	C026 E 0340W	4							Rod. Connecting,		
	C026 E 0712A	4							Piston Assembly.		
	X026 E 0352Z	1							Jackshaft.		
EA1	A026 E 6083Z	1							Sump.		
EA2	A036 E 6164Z	1							Plug. Drain,		
EA3	A036 E 6165Z	1							Washer. Drain Plug,		
EA4	A026 E 6085Z	1							Gasket. Sump, -L/H		

PLATE	PART NO.	QUANTITY					STEERING		DESCRIPTION	CHANGE POINT	BULLETIN
		ALL	T/C	T/C Fed.	Special	Spec. Fed.	LH	RH			
Ref: No.											
	A026 E 6084Z	1							Gasket. Sump, - R/H.		
EA5	A026 E 6082Z	1							Seal. Sump, - Front,		
EA6	A026 E 6086Z	1							Seal. Sump, - Rear,		
EA7	A026 E 6064Z	18							Bolt. Sump to Cylinder Block,		
EA8	A026 E 6117Z	18							Washer. Sump to Cylinder Block,		
EA9	X026 E 0384Z	1							Retainer. Rear Oil Seal,		
EA10	X026 E 0387Z	1							Gasket. Rear Oil Seal Retainer,		
EA11	A026 E 6047Z	4							Bolt. Rear Oil Seal Retainer,		
EA12	A026 E 6091Z	4							Washer. Rear Oil Seal Retainer,		
EA13	C026 E 0708S	1							Cylinder Block.		
EA14	A026 E 6090Z	3							Plug. Water Jacket,		
EA15	A026 E 6032Z	1							Plug. Water Drain,		
EA16	A026 E 6031Z	2							Plug. Oil Gallery,		
EA17	A036 E 6167Z	1							Adaptor. Oil Pressure Tube,		
EA18	A026 E 6089W	1							Tube. Oil Intake,		
EA19	A026 E 6088W	1							Screen Assembly. Oil Pump,		
EA20	A026 E 6087W	1							Tube. Return,		
EA21	A036 E 6166Z	1							Seal. Crankshaft, - rear,		
EA22	X026 E 0034Z	1							Connector. Cylinder Block Breather,		
EA23	A026 E 6106Z	2							Dowel Pin. Block to Clutch Housing,		
EA24	A026 E 6125Z	1							Cover. Starter Motor Drive,		

0972.

EA2

PLATE	PART NO.	QUANTITY					STEERING		DESCRIPTION	CHANGE POINT	BULLETIN
		ALL	T/C	T/C Fed.	Special	Spec. Fed.	LH	RH			
Ref: No.											
EA25	A026 E 6018Z	1							Cover. Flywheel, - upper		
EA26	A036 E 6168Z	1							Cover. Flywheel, - lower		
EA27	C074 E 0481Z	1							Bracket. Engine Mounting L/H,		
	C074 E 0480Z	1							Bracket. Engine Mounting R/H,		
EA28	A074 E 0490Z	8							Stud. Mounting Bracket,		
EA29	118	8							Washer. Plain,		
EA30	A074 E 6016Z	8							Nut.		
EA31	A036 E 6169Z	4							Bolt. Bracket to Engine Mounting,		
EA32	214	4							Nut. Bracket to Engine Mounting,		
EA33	A074 E 0549Z	2							Engine Mounting.		
EA34	10	8							Bolt. Engine Mounting,		
EA35	211	8							Nut. Engine Mounting,		
EA36	A026 E 6045Z	1							Set Screw.		
EA37	A036 E 6170Z	1							Washer.		
EA38	X026 E 0004Z	1							Backplate. Timing Case,		
EA39	X026 E 0005Z	1							Gasket. Backplate,		
	A074 E 0705W	1							Cover Assembly. Timing Case, comprising:		
ED	A026 E 6000W	1							Water Pump Assembly.		
EF28	X026 E 0014Z	1							Damper. Timing Chain,		

PLATE	PART NO.	QUANTITY					STEERING		DESCRIPTION	CHANGE POINT	BULLETIN REF.
		ALL	T/C	T/C Fed.	Special	Spec. Fed.	LH	RH			
Ref: No.											
EA40	A074 E 0361Y	1							Cover, Timing Case,		
	X026 E 0734W	1							Cover. Timing Case, c/w Oil Tube,		
	A026 E 6030Z	1							Tube. Oil,		
	A074 E 6004Z	1							Plug Pressure,		
									Attachings. Timing Case to Head:		
	12	1							Set Screw,		
	115	1							Washer Spring,		
	118	1							Washer Plain,		
									Attachings. Timing Case to Block,		
	A026 E 6057Z	6							Bolt. 1/2 ins. UNC X 2 1/2 ins.,		
	107	6							Washer. Spring,		
	68L	3							Bolt		
	A026 E 6050Z	6							Washer Plain,		
	208	3							Nut.		
	A026 E 6121Z	1							Bolt. 5/16 ins. UNC X 2 1/2 ins.,		
	115	1							Washer Spring,		
	17B	1							Bolt.		
	118	1							Washer. Plain,		
	213	1							Nut.		
EA41	A026 E 0383B	1							Dip Stick.		

1972.

EA4.

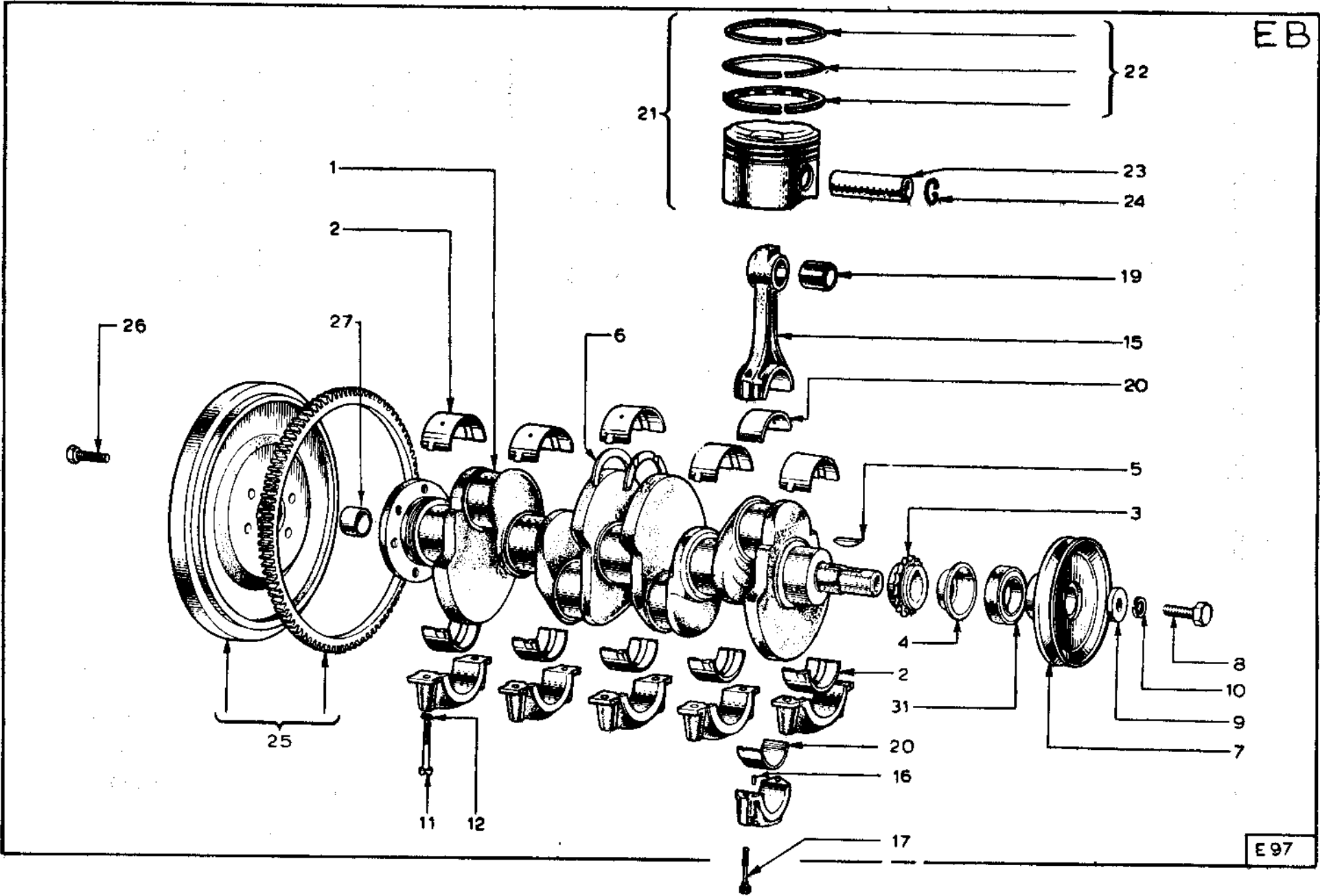




PLATE Ref: No.	PART NO.	QUANTITY					STEERING		DESCRIPTION	CHANGE POINT	BULLETIN
		ALL	T/C	T/C Fed.	Special	Spec. Fed.	LH	RH			
EB20	A026 E 6029Z	8							Liner. Connecting Rod Bearing,		
	A026 E 0715S	1							Kit. Rod Bearing Liner, (Std)		
	A026 E 0735S	1							Kit. Rod Bearing Liner, (0.010 ins. O/S)		
	A026 E 0736S	1							Kit. Rod Bearing Liner, (0.020 ins. O/S)		
EB21	C026 E 0712A	4							Assembly. Piston, - Grade I (Std)		
									82.474 mm.	3.2470 ins.	
									82.466 mm.	3.2467 ins.	
	C026 E 0712B	4							Assembly. Piston, - Grade II (Std)		
82.481 mm.									3.2473 ins.		
									82.474 mm.	3.2470 ins.	
	C026 E 0712C	4							Assembly. Piston, - Grade III (Std)		
82.489 mm.									3.2476 ins.		
82.481 mm.									3.2473 ins.		
	C026 E 0712D	4							Assembly. Piston, - Grade IV (Std)		
82.497 mm.									3.2479 ins.		
82.489 mm.									3.2476 ins.		
	C026 E 0732A	4							Assembly. Piston, - Grade I (0.015 ins. O/S)		
82.855 mm.									3.2620 ins.		
82.847 mm.									3.2617 ins.		
	C026 E 0732B	4							Assembly. Piston, - Grade II (0.015 ins. O/S)		
82.862 mm.									3.2623 ins.		
82.855 mm.									3.2620 ins.		

1272 (AL 1)

EB2.

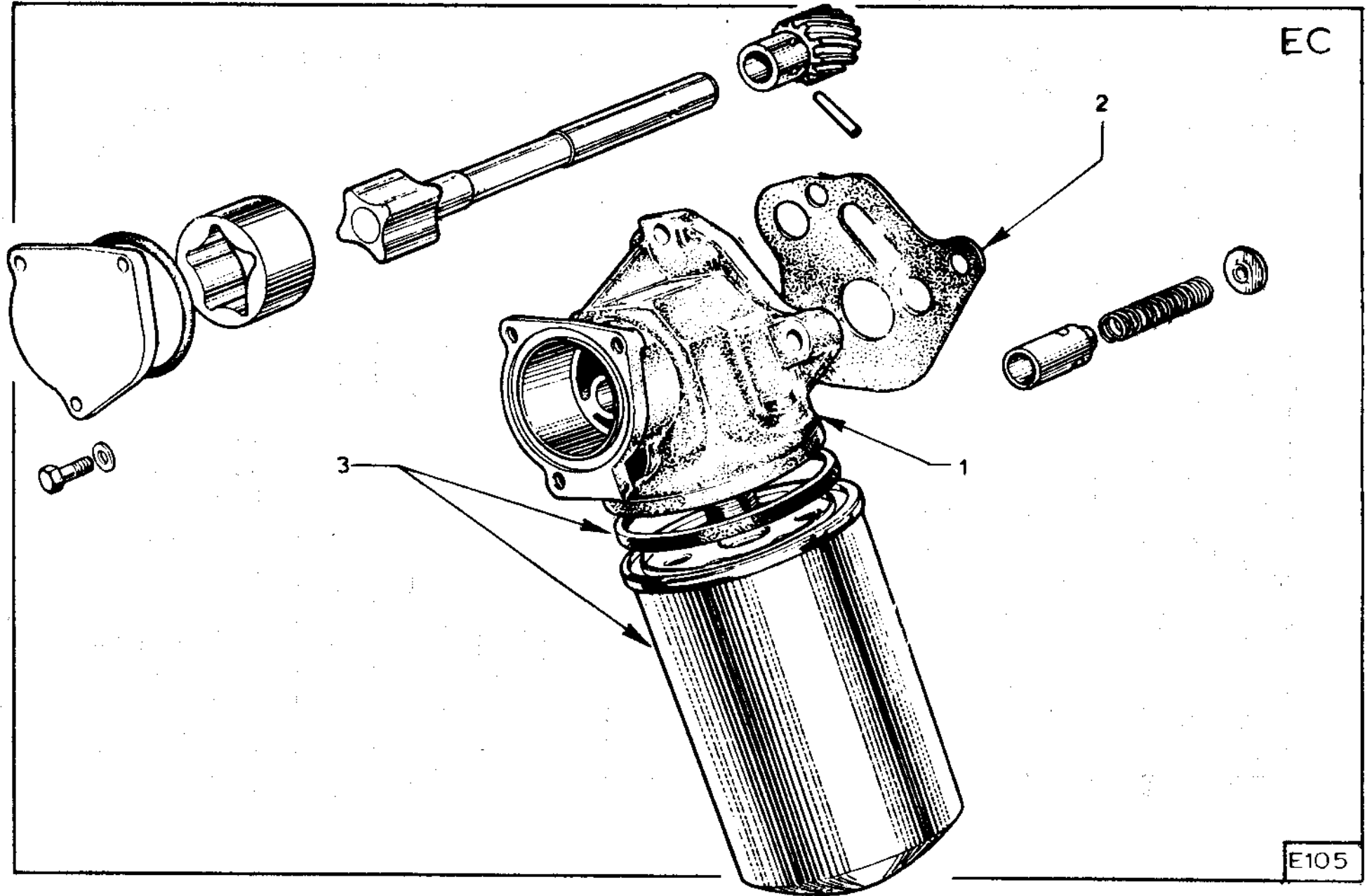


PLATE	PART NO.	QUANTITY					STEERING		DESCRIPTION	CHANGE POINT	BULLETIN R
		ALL	T/C	T/C Fed.	Special	Spec. Fed.	LH	RH			
Ref: No.											
	C026 E 0732C	4							Assembly. Piston, - Grade 111 (0.015 ins. O/S) 82.870 mm. 3.2626 ins. 82.862 mm. 3.2623 ins.		
	C026 E 0732D	4							Assembly. Piston, - Grade IV (0.015 ins. O/S) 82.878 mm. 3.2629 ins. 82.870 mm. 3.2626 ins.		
EB22	X026 E 0733W	4							Set. Piston Ring, (Std)		
	A026 E 0733W	4							Set. Piston Ring, (0.015 ins. O/S)		
	X026 E 6003Z	AR							Set. Oil Control Ring, (Std)		
	X026 E 6004Z	AR							Set. Oil Control Ring, (0.015 ins. O/S)		
EB23	X026 E 0405Y	4							Pin. Piston,		
EB24	A036 E 6177Z	8							Retainer. Pin,		
EB25	A026 E 0717W	1							Assembly. Flywheel,		
EB26	A026 E 6062Z	6							Bolt. Flywheel Securing,		
	A026 E 6104Z	1							Pin. Dowel,		
EB27	A074 E 0137Z	1							Bearing. Clutch Spigot,		

1272 (AL 1)

EB3.

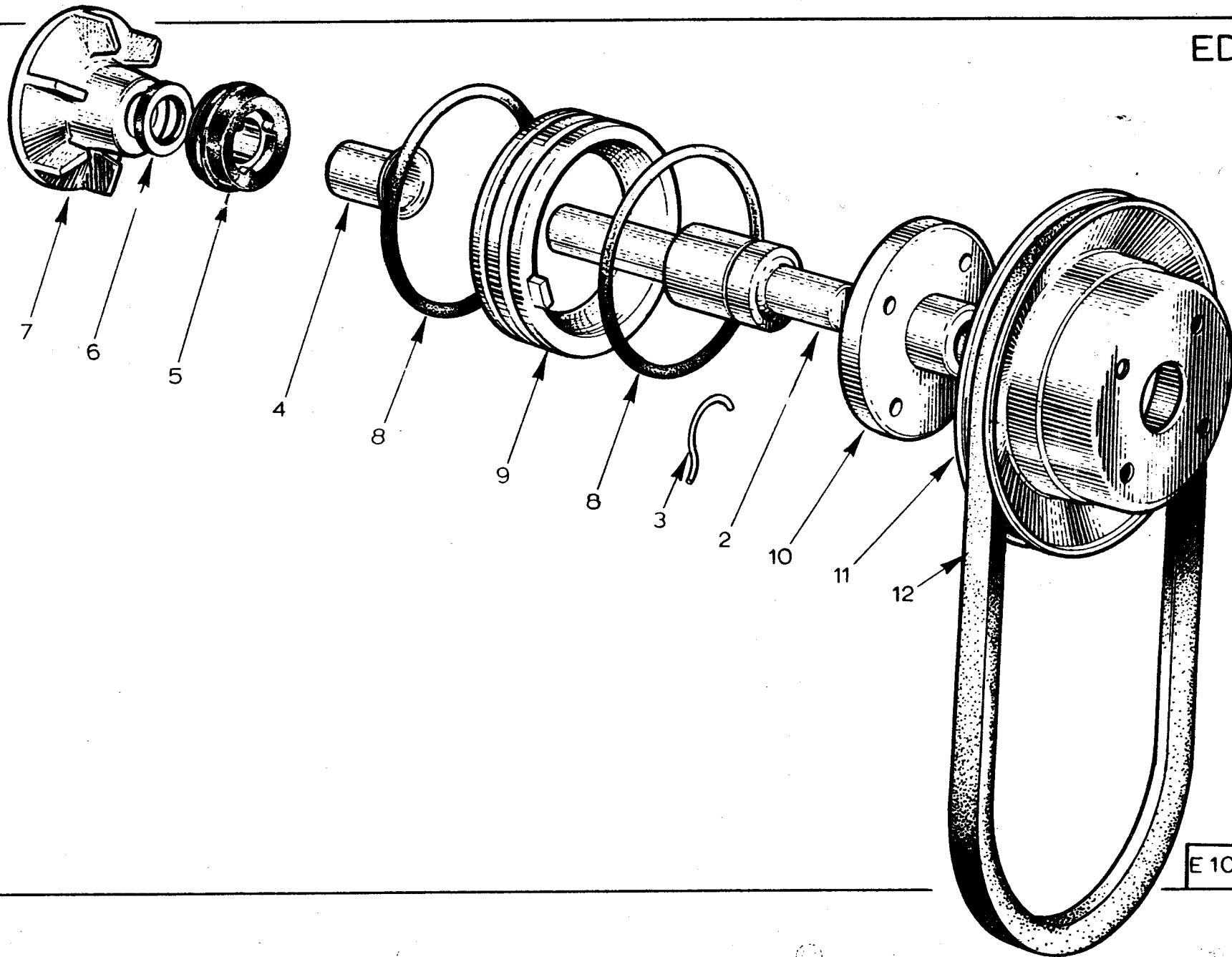
EC



E105

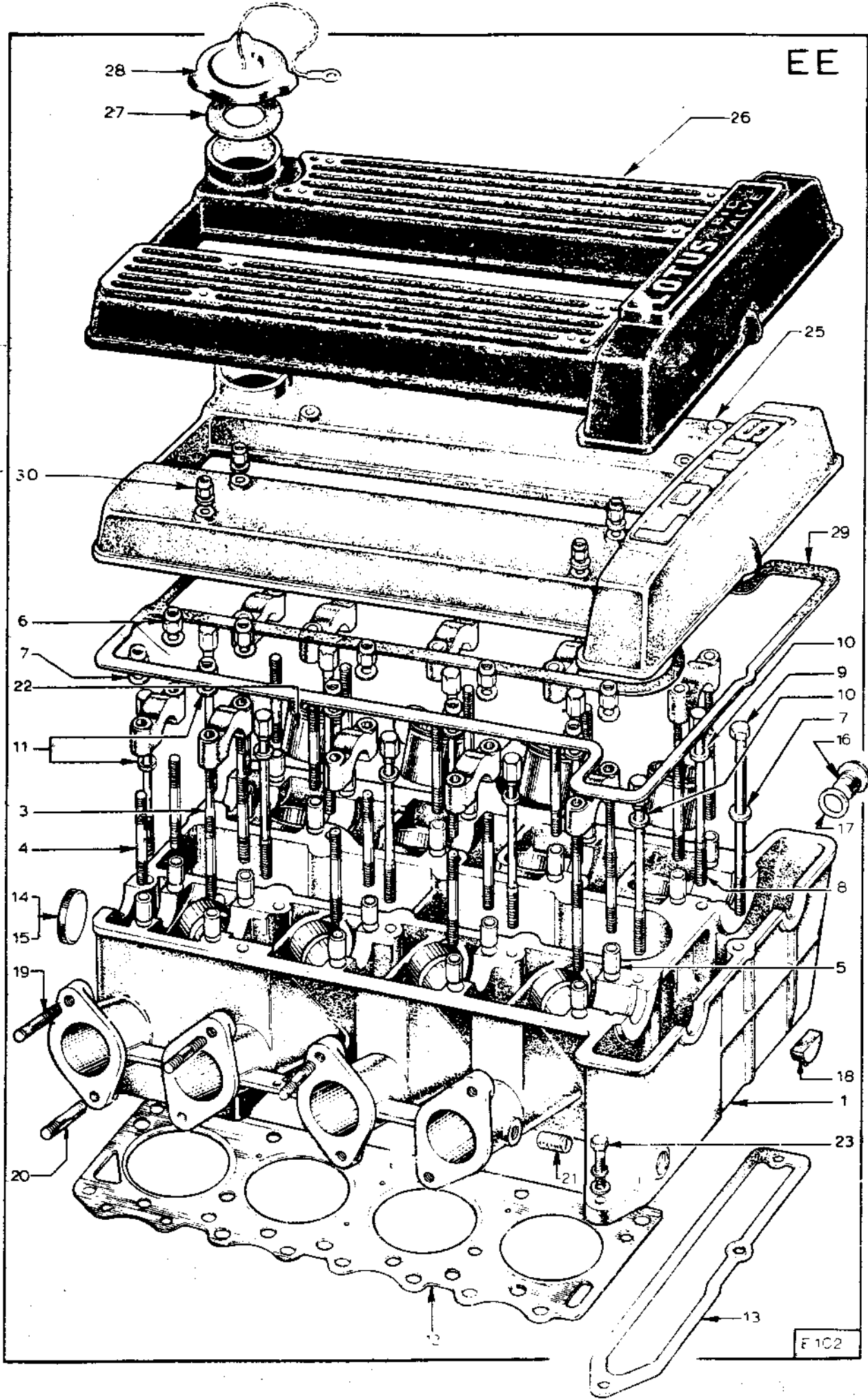
PLATE Ref: No.	PART NO.	QUANTITY					STEERING		DESCRIPTION	CHANGE POINT	BULLETIN RE
		ALL	T/C	T/C Fed.	Special	Spec. Fed.	LH	RH			
EC1	A036 E 6029W	1							Assembly. Oil Pump,		
EC2	A026 E 6028Z	1							Gasket. Oil Pump,		
EC3	A036 E 6030W	1							Assembly. Oil Filter,		
	13	3							Bolt. Oil Pump to Cylinder Block,		

ED



E 106

EE



F 102

PLATE Ref: No.	PART NO.	QUANTITY					STEERING		DESCRIPTION	CHANGE POINT	BULLETIN F
		ALL	T/C	T/C Fed.	Special	Spec. Fed.	LH	RH			
	A026 E 6000W								Kit. Water Pump Repair, comprising:		
ED2	A026 E 6049W	1							Shaft.		
ED3	A036 E 6188Z	1							Retainer.		
ED4	A026 E 6020Z	1							Slinger.		
ED5	X026 E 0393Z	1							Seal.		
ED6	A026 E 6127Z	1							Disc.		
ED7	A026 E 6126Z	1							Impellor.		
ED8	X026 E 6002Z	2							'O' Ring.		
ED9	X026 E 0362Y	1							Insert.		
ED10	A036 E 6189Z	1							Hub.		
	A026 E 6006Z	4							Bolt. Attaching,		
	A036 E 6190Z	4							Washer.		
ED11	A036 E 6191Z	1							Pulley.		
ED12	A074 E 6005Z	1							Belt. Water Pump,		

0972.

ED1.

PLATE	PART NO.	QUANTITY					STEERING		DESCRIPTION	CHANGE POINT	BULLETIN
		ALL	T/C	T/C Fed.	Special	Spec. Fed.	LH	RH			
	A074 E 0729S		1				*	*	Cylinder Head Assembly. (less Camshafts, Tappets and Tappet Shims)		
	E074 E 0729S			1		1			Cylinder Head Assembly. (ditto)		
	C074 E 0729S				1		*	*	Cylinder Head Assembly. (ditto)		
EE1	A074 E 0703S		1				*	*	Cylinder Head Sub - assembly.		
	E074 E 0703S			1		1			Cylinder Head Sub - assembly.		
	C074 E 0729S				1		*	*	Cylinder Head Sub - assembly. comprising: Cylinder Head. Valve Inserts. Valve Guides. Bearing Caps.		
EE3	A026 E 0318Z	8							Stud. Bearing Cap, (long)		
EE4	A026 E 0319Z	12							Stud. Bearing Cap, (short)		
EE5	X026 E 0320Z	20							Dowel Rings.		
EE6	A036 E 6192Z	20							Nut.		
EE7	118B	20							Washer.		
EE8	X026 E 0027A	10							Bolt. Cylinder Head,		
EE9	X026 E 0029Z	1							Bolt. Cylinder Head,		
	X036 M 6243Z	1							Washer.		
EE10	X026 E 0028Z	8							Washer.		
EE11	X026 E 0031Z	2							Washer.		

0972.

EE1.

PLATE Ref. No.	PART NO.	QUANTITY					STEERING		DESCRIPTION	CHANGE POINT	BULLETIN REF.
		ALL	T/C	T/C Fed.	Special	Spec. Fed.	LH	RH			
EE12	X026 E 0026Z	1							Gasket. Cylinder Head,		
EE13	X026 E 0032Z	1							Gasket. Head to Timing Case,		
EE14	A026 E 6112Z	4							Plug. Expansion,		
EE15	A026 E 6122Z	1							Plug. Expansion,		
EE16	X026 E 0046Z	1							Plug. Transverse Oil Gallery,		
EE17	X026 E 0048Z	1							Washer. Plug,		
EE18	X026 E 0002Z	4							Plug. Camshaft Bore,		
EE19	A026 E 6027Z		6		6		*	*	Stud. (short) Carb. to Cylinder Head,		
EE20	X026 S 0098Z		2		2		*	*	Stud. (long) Carb. to Cylinder Head,		
	118		16		16		*	*	Washer. Plain,		
	116B		8		8		*	*	Washer. Thackeray,		
	211		8		8				Nut.		
	A036 S 0171Z			8		8			Stud. Secondary Throttle Body to Cylinder Head,		
	118			8		8			Washer. Plain,		
	211			8		8			Nut.		
EE21	A026 E 6061Z	1							Plug. Vacuum Take-off Blanking,		
EE22	X026 E 0342Y	8							Sleeve. Tappet,		
EE23	XUCB 0516	1							Bolt. Head to Timing Case,		
	115	1							Washer. Spring,		
	118	1							Washer. Plain,		



PLATE Ref: No.	PART NO.	QUANTITY					STEERING		DESCRIPTION	CHANGE POINT	BULLETIN REF
		ALL	T/C	T/C Fed.	Special	Spec. Fed.	LH	RH			
EE25	A074 E 0702Z		1				*	*	Cover Assembly. Camshaft, (red)		
EE26	B074 E 0702Z			1					Cover Assembly. Camshaft, (red BV)		
	C074 E 0702Z				1	1	*	*	Cover Assembly. Camshaft, (black BV) comprises: Cover. Camshaft, Cap. Oil Filler, Gasket.		
EE27	A026 E 0415Z	1							Gasket. Camshaft Cover,		
EE28	A026 E 0325Z	1							Nut.		
EE29	A026 E 0001Z	1							Washer.		
EE30	208	8									
	A074 E 6009Z	8									

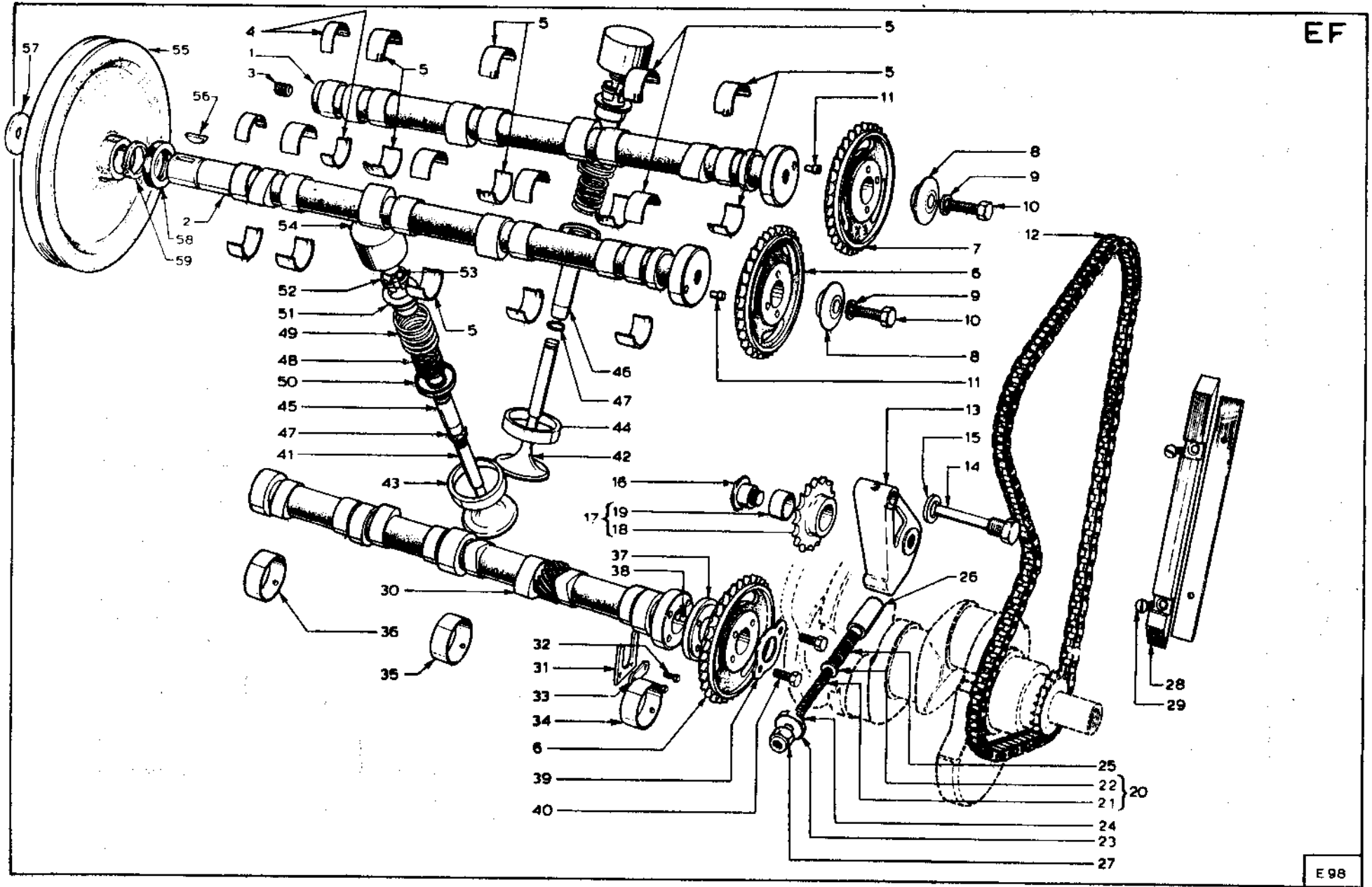


PLATE Ref. No.	PART NO.	QUANTITY					STEERING		DESCRIPTION	CHANGE POINT	BULLETIN RE
		ALL	T/C	T/C Fed.	Special	Spec. Fed.	LH	RH			
EF1	C026 E 0351Y		1	1		1	*	*	Camshaft. (Exhaust)		
	D026 E 0351Y				1		*	*	Camshaft. (Exhaust)		
EF2	C074 E 0351Y		1	1		1	*	*	Camshaft. (Inlet)		
	D074 E 0351Y				1		*	*	Camshaft. (Inlet)		
EF3	A026 E 6016Z	1							Plug.		
EF4	X026 E 0303Z	4							Bearing. (rear)		
EF5	X026 E 0003Z	16							Bearing.		
EF6	A026 E 6024Z	2							Sprocket. (Inlet/Jackshaft)		
EF7	X026 E 0305S	1							Sprocket. (Exhaust)		
EF8	X026 E 0016Z	2							Washer. Sprocket to Camshaft,		
EF9	A026 E 6094Z	2							Washer. Sprocket to Camshaft,		
EF10	X026 E 0304Z	2							Bolt. Sprocket to Camshaft,		
EF11	A026 E 6023Z	2							Dowel.		
EF12	X026 E 0007Z	1							Chain. Timing,		
EF13	X026 E 0012Z	1							Bracket. Chain Tensioner,		
EF14	X026 E 0011Z	1							Pin. Pivot,		
EF15	X026 E 0048Z	1							Washer.		
EF16	X026 E 0013Z	1							Pin.		
EF17	X026 E 0707W	1							Assembly. Sprocket, comprising:-		
EF18	X026 E 0381Z	1							Sprocket,		
EF19	X026 E 0382Z	1							Bush.		

0972.

EF1.

PLATE Ref: No.	PART NO.	QUANTITY					STEERING		DESCRIPTION	CHANGE POINT	BULLETIN REF.
		ALL	T/C	T/C Fed.	Special	Spec. Fed.	LH	RH			
EF20	X026 E 0706W	1							Sub - assembly. Adjuster Screw, comprising:		
EF21	X026 E 0008Z	1							Bolt. Adjustment,		
EF22	A026 E 6098Z	1							Washer.		
EF23	X026 E 0391Z	1							Nut. Adjusting,		
EF24	X026 E 0392Z	1							Washer.		
EF25	X026 E 0009Z	1							Spring.		
EF26	X026 E 0010Z	1							Plunger.		
EF27	A036 E 6192Z	1							Nut.		
EF28	X026 E 0014Z	1							Guide. Chain,		
EF29	A026 E 6059Z	2							Screw. Securing,		
EF30	X026 E 0352Z	1							Jackshaft.		
EF31	A026 E 6063Z	1							Plate. Thrust,		
EF32	A026 E 6026Z	2							Bolt.		
EF33	A026 E 6037Z	1							Retainer. Bolt,		
EF34	A036 E 6193Z	1							Bearing. (Front)		
EF35	A036 E 6194Z	1							Bearing. (Centre)		
EF36	A036 E 6195Z	1							Bearing. (Rear)		
EF37	X026 E 0017Z	1							Adaptor.		
EF38	X026 E 0018Z	1							Dowel.		
EF39	A026 E 6025Z	1							Retainer.		

0972.

EF2.

PLATE Ref: No.	PART NO.	QUANTITY					STEERING		DESCRIPTION	CHANGE POINT	BULLETIN RE
		ALL	T/C	T/C Fed.	Special	Spec. Fed.	LH	RH			
EF 40	A026 E 6041Z	2							Bolt		
EF 41	A026 E 0019Y		4				*	*	Valve, inlet		
	B026 E 0019Y			4	4	4	*	*	Valve, inlet		
EF 42	B026 E 0200Y	4							Valve, exhaust		
EF 43	X026 E 0312Z		4				*	*	Insert, Inlet Valve Seat, (std.)		
	A026 E 0124Z			4	4	4	*	*	Insert, Inlet Valve Seat, (std.)		
	A026 E 0312A		4				*	*	Insert, Inlet Valve Seat, (0.005 ins. O/S)		
	A026 E 0125Z			4	4	4	*	*	Insert, Inlet Valve Seat, (0.005 ins. O/S)		
	A026 E 0312B		4				*	*	Insert, Inlet Valve Seat, (0.010 ins. O/S)		
	A026 E 0126Z			4	4	4	*	*	Insert, Inlet Valve Seat, (0.010 ins. O/S)		
	A026 E 0312C		4				*	*	Insert, Inlet Valve Seat, (0.015 ins. O/S)		
	A026 E 0127Z			4	4	4	*	*	Insert, Inlet Valve Seat, (0.015 ins. O/S)		
EF 44	A026 E 0313Z	4							Insert, Exhaust Valve Seat, (std.)		
	A026 E 0313A		4						Insert, Exhaust Valve Seat, (0.005 ins. O/S)		
	A026 E 0313B		4						Insert, Exhaust Valve Seat, (0.010 ins. O/S)		
	A026 E 0313C		4						Insert, Exhaust Valve Seat, (0.015 ins. O/S)		
EF 45	A026 E 0314Z		4						Guide, Inlet Valve, (Std.)		
	A026 E 0314A		4						Guide, Inlet Valve, (0.001 ins. O/S)		
	A026 E 0314B		4						Guide, Inlet Valve, (0.005 ins. O/S)		
	A026 E 0314C		4						Guide, Inlet Valve, (0.006 ins. O/S)		

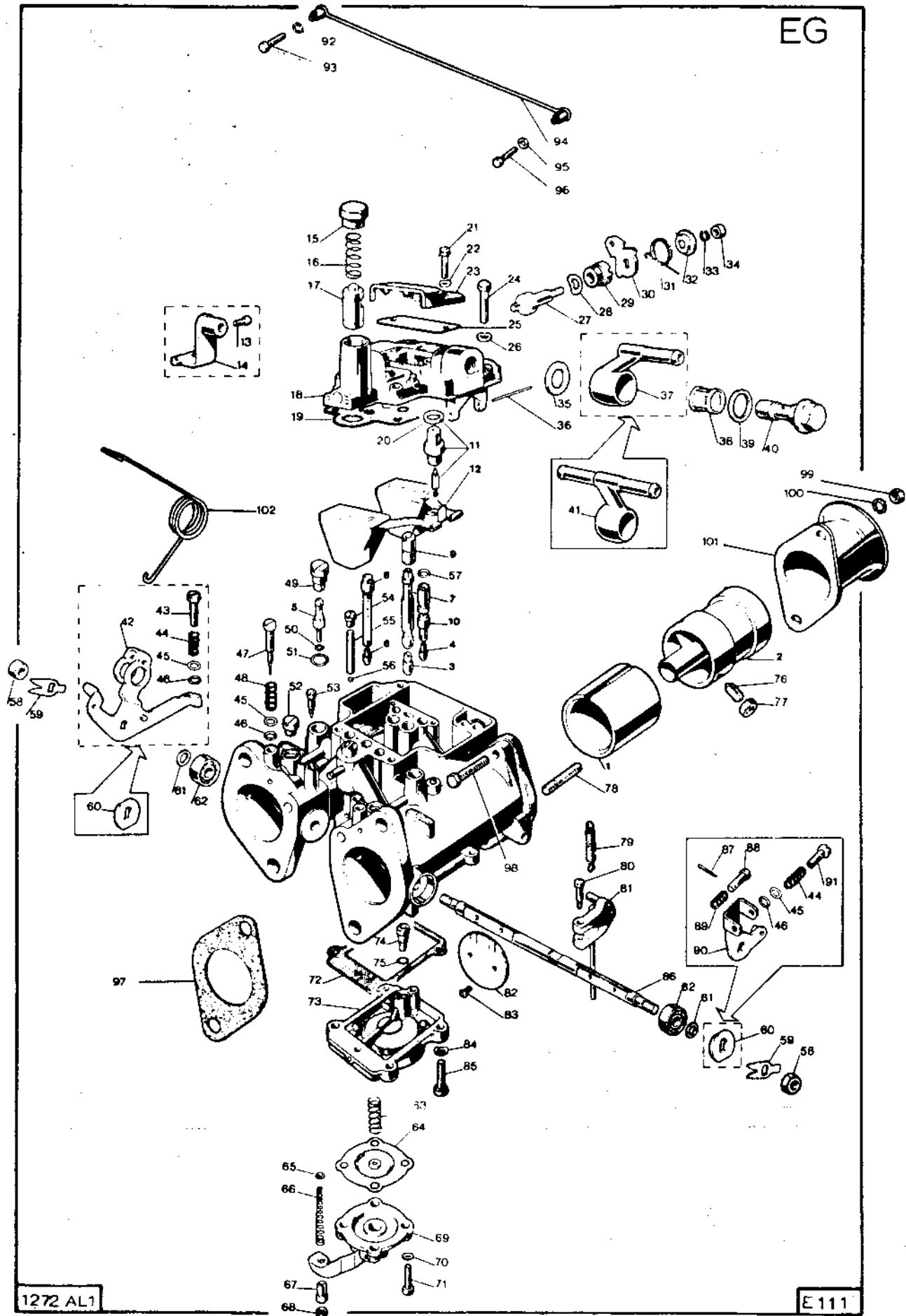
PLATE	PART NO.	QUANTITY					STEERING		DESCRIPTION	CHANGE POINT	BULLETIN REF.
		ALL	T/C	T/C Fed.	Special	Spec. Fed.	LH	RH			
Ref: No.											
EF 45	A026 E 0314D	4							Guide, Inlet Valve (0.015 ins. O/S)		
	A026 E 0314E	4							Guide, Inlet Valve (0.030 ins. O/S)		
EF 46	A026 E 0315Z	4							Guide, Exhaust Valve, (Std.)		
	A026 E 0315A	4							Guide, Exhaust Valve, (0.001 ins. O/S)		
	A026 E 0315B	4							Guide, Exhaust Valve, (0.005 ins. O/S)		
	A026 E 0315C	4							Guide, Exhaust Valve, (0.006 ins. O/S)		
	A026 E 0315D	4							Guide, Exhaust Valve, (0.015 ins. O/S)		
	A026 E 0315E	4							Guide, Exhaust Valve, (0.030 ins. O/S)		
EF 47	A026 E 6018Z	8							Circlip, Guide Valve		
EF 48	B026 E 0023Z	8							Spring, Valve Inner		
EF 49	B026 E 0022Z	8							Spring, Valve Outer		
EF 50	A026 E 0316Z	8							Seat, Valve Spring		
EF 51	A026 E 0021Z	8							Retainer, Valve Spring		
EF 52	X026 E 0045Z	8							Cone, Split		
EF 53	A026 E 6165Z	AR							Shim. 0.065 ins.		
	A026 E 6166Z	AR							Shim. 0.066 ins.		
	A026 E 6167Z	AR							Shim. 0.067 ins.		
	A026 E 6168Z	AR							Shim. 0.068 ins.		
	A026 E 6169Z	AR							Shim. 0.069 ins.		
	A026 E 6170Z	AR							Shim. 0.070 ins.		

PLATE	PART NO.	QUANTITY					STEERING		DESCRIPTION	CHANGE POINT	BULLETIN REF.
		ALL	T/C	T/C Fed.	Special	Spec. Fed.	LH	RH			
Ref: No.											
	A026 E 6171Z	AR							Shim. 0.071 ins.		
	A026 E 6172Z	AR							Shim. 0.072 ins.		
	A026 E 6173Z	AR							Shim. 0.073 ins.		
	A026 E 6174Z	AR							Shim. 0.074 ins.		
	A026 E 6175Z	AR							Shim. 0.075 ins.		
	A026 E 6176Z	AR							Shim. 0.076 ins.		
	A026 E 6177Z	AR							Shim. 0.077 ins.		
	A026 E 6178Z	AR							Shim. 0.078 ins.		
	A026 E 6179Z	AR							Shim. 0.079 ins.		
	A026 E 6180Z	AR							Shim. 0.080 ins.		
	A026 E 6181Z	AR							Shim. 0.081 ins.		
	A026 E 6182Z	AR							Shim. 0.082 ins.		
	A026 E 6183Z	AR							Shim. 0.083 ins.		
	A026 E 6184Z	AR							Shim. 0.084 ins.		
	A026 E 6185Z	AR							Shim. 0.085 ins.		
	A026 E 6186Z	AR							Shim. 0.086 ins.		
	A026 E 6187Z	AR							Shim. 0.087 ins.		
	A026 E 6188Z	AR							Shim. 0.088 ins.		
	A026 E 6189Z	AR							Shim. 0.089 ins.		
	A026 E 6190Z	AR							Shim. 0.090 ins.		

PLATE	PART NO.	QUANTITY					STEERING		DESCRIPTION	CHANGE POINT	BULLETIN REF.
		ALL	T/C	T/C Fed.	Special	Spec. Fed.	LH	RH			
Ref: No.											
EF 54	X026 E 0024Z	8							Tappet		
EF 55	A074 E 0131Z	1							Pulley, Alternator		
EF 56	A074 E 6003Z	1							Key, Pulley		
EF 57	A05 W 1608	1							Washer		
	13	1							Screw. Securing		
EF 58	A074 E 6001Z	1							Seal, Oil		
EF 59	A074 E 6002Z	1							Circlip		



EG



1272 AL1

E111

PLATE	PART NO.	QUANTITY					STEERING		DESCRIPTION	CHANGE POINT	BULLETIN REF.
		ALL	T/C	T/C Fed.	Special	Spec. Fed.	LH	RH			
Ref: No.											
									<u>DELLORTO CARBURETTER.</u>		
	N026 S 0710W		1					*	Carburetter . Front,		
	N026 S 0711W		1					*	Carburetter . Rear,		
	P026 S 0710W		1				*	*	Carburetter . Front,		
	P026 S 0711W		1				*	*	Carburetter . Rear,		
	Q026 S 0710W				1			*	Carburetter . Front,		
	Q026 S 0711W				1			*	Carburetter . Rear,		
	R026 S 0710W				1			*	Carburetter . Front,		
	R026 S 0710W				1			*	Carburetter . Rear,		
EG1	A074 E 6011Z		4					*	Choke . (30),		
	A036 E 6040Z				4			*	Choke . (33),		
	A036 E 6039Z				4			*	Choke . (32),		
EG2	A036 E 6059Z		4		4			*	Auxiliary Venturi.		
EG3	A074 E 6013Z		4					*	Jet. Main, (115),		
	A036 E 6042Z		4		4			*	Jet. Main, (120)(European small valve and Domestic big valve engines)		
	A036 E 6043Z				4			*	Jet. Main, (135),		
EG4	A036 E 6048Z		4		4			*	Jet. Idling, (50),		
	A074 E 6012Z		4					*	Jet. Idling, (45),		
	A036 E 6047Z				4			*	Jet. Idling, (47),		

PLATE	PART NO.	QUANTITY					STEERING		DESCRIPTION	CHANGE POINT	BULLETIN REF.
		ALL	T/C	T/C Fed.	Special	Spec. Fed.	LH	RH			
									<u>DELLORTO CARBURETTER.</u>		
EG5	A074 E 6015Z		4					*	Jet. Pump, (40),		
	A036 E 6056Z		4		4			*	Jet. Pump, (33),		
	A036 E 6057Z				4			*	Jet. Pump, (45),		
EG6	A036 E 6051Z		2		2			*	Jet. Starting, (70),		
EG7	A036 E 6053Z		4					*	Emulsion Tube. Main,		
	A036 E 6054Z		4		4			*	Emulsion Tube. Main, (Not Domestic small valve engines)		
EG8	A036 E 6055Z		2		2			*	Emulsion Tube. Starting,		
EG9	A074 E 6014Z		4					*	Jet. Main Air Corrector, (160),		
	A036 E 6045Z				4			*	Jet. Main Air Corrector, (130),		
	A036 E 6044Z		4		4			*	Jet. Main Air Corrector, (200),		
EG10	A036 E 6050Z		4		4			*	Jet. Idling Air Corrector,		
	A036 E 6049Z		4		4			*	Jet. Idling Air Corrector,		
EG11	A036 E 6060Z		2		2			*	Needle Valve.		
EG12	A036 E 6061Z		2		2			*	Float Assembly.		
	A036 E 6062Z		2		2			*	Float Assembly.		
EG13	A036 E 6063Z		1		1			*	Screw. Choke Cable,		
EG14	A036 E 6064Z		1		1			*	Support. Choke Cable,		
EG15	A036 E 6065Z		2		2			*	Plug. Starting Valve,		
EG16	A036 E 6066Z		2		2			*	Spring. Starting Valve,		

0972.

EG2.



PLATE Ref: No.	PART NO.	QUANTITY					STEERING		DESCRIPTION	CHANGE POINT	BULLETIN REF.
		ALL	T/C	T/C Fed.	Special	Spec. Fed.	LH	RH			
									<u>DELLORTO CARBURETTER</u>		
G37	A036 E 6087Z	1			1		*	*	Union. Banjo, (rear carb.)		
G38	A036 E 6088Z	2			2		*	*	Filter.		
G39	A036 E 6089Z	2			2		*	*	Gasket. Banjo Plug,		
G40	A036 E 6090Z	2			2		*	*	Plug. Banjo,		
G41	A036 E 6091Z	1			1		*	*	Union. Banjo, (front carb.)		
G42	A036 E 6092Z	1			1		*	*	Lever. Throttle Control,		
G43	A036 E 6093Z	1			1		*	*	Screw. Adjusting,		
G44	A036 E 6094Z	2			2		*	*	Spring. Adjusting Screw,		
G45	A036 E 6095Z	4			4		*	*	Washer. Plain,		
G46	A036 E 6096Z	4			4		*	*	Gasket.		
G47	A036 E 6097Z	4			4		*	*	Screw. Idling Mixture,		
G48	A036 E 6098Z	4			4		*	*	Spring. Idling Mixture,		
G49	A036 E 6099Z	4			4		*	*	Plug. Pump Jet,		
G50	A036 E 6100Z	4			4		*	*	Gasket. Pump Jet - small,		
G51	A036 E 6101Z	4			4		*	*	Gasket. Pump Jet - large,		
G52	A036 E 6102Z	4			4		*	*	Plug.		
G53	A036 E 6103Z	4			4		*	*	Plug. Pressure Connection,		
G54	A036 E 6104Z	4			4		*	*	Plug. Delivery Valve Seat,		
G55	A036 E 6105Z	4			4		*	*	Stuffing. Delivery Valve,		
G56	A036 E 6106Z	4			4		*	*	Outlet Valve.		

PLATE Ref: No.	PART NO.	QUANTITY					STEERING		DESCRIPTION	CHANGE POINT	BULLETIN REF
		ALL	T/C	T/C Fed.	Special	Spec. Fed.	LH	RH			
									<u>DELLORTO CARBURETTER</u>		
EG57	A036 E 6107Z		4		4		*	*	Gasket.		
EG58	A036 E 6108Z		4		4		*	*	Nut.		
EG59	A036 E 6109Z		4		4		*	*	Plate Retaining.		
EG60	A036 E 6110Z		1		1		*	*	Spacer.		
EG61	A036 E 6111Z		4		4		*	*	Washer. Distance,		
EG62	A036 E 6112Z		4		4		*	*	Ball Bearing.		
EG63	A036 E 6113Z		2		2		*	*	Spring. Pump Diaphragm,		
EG64	A036 E 6114Z		2		2		*	*	Pump. Diaphragm,		
EG65	A036 E 6159Z		2		2		*	*	Washer.		
EG66	A036 E 6116Z		2		2		*	*	Spring. Pump Rod,		
EG67	A036 E 6117Z		2		2		*	*	Nut. Adjusting,		
EG68	A036 E 6118Z		2		2		*	*	Nut. Locking,		
EG69	A036 E 6160Z		2		2		*	*	Pump. Cover,		
EG70	A036 E 6120Z		8		8		*	*	Washer. Spring,		
EG71	A036 E 6121Z		8		8		*	*	Screw. Pump Cover,		
EG72	A036 E 6122Z		2		2		*	*	Gasket. Pump Body,		
EG73	A036 E 6123Z		2		2		*	*	Pump Body.		
EG74	A036 E 6124Z		2		2		*	*	Inlet Valve.		
EG75	A036 E 6125Z		2		2		*	*	Gasket. Inlet Valve,		
EG76	A036 E 6161Z		4		4		*	*	Screw. Auxiliary Venturi Fixing,		
<u>0972.</u>											

PLATE Ref: No.	PART NO.	QUANTITY					STEERING		DESCRIPTION	CHANGE POINT	BULLETIN REF.
		ALL	T/C	T/C Fed.	Special	Spec. Fed.	LH	RH			
									<u>DELLORTO CARBURETTER</u>		
EG77	A036 E 6127Z	4		4			*	*	Nut. Fixing Screw,		
EG78	A036 E 6128Z	4		4			*	*	Stud.		
EG79	A036 E 6129Z	2		2			*	*	Spring. Throttle Shaft Return,		
EG80	A036 E 6130Z	2		2			*	*	Screw. Pump Control Lever,		
EG81	A036 E 6162Z	2		2			*	*	Rod. Lever and Pump Control,		
EG82	A036 E 6132Z	4		4			*	*	Throttle.		
EG83	A036 E 6133Z	8		8			*	*	Screw. Throttle,		
EG84	A036 E 6134Z	8		8			*	*	Washer. Spring,		
EG85	A036 E 6135Z	8		8			*	*	Screw. Pump Body,		
EG86	A036 E 6136Z	2		2			*	*	Shaft. Throttle,		
EG87	A036 E 6137Z	1		1			*	*	Pin. Split,		
EG88	A036 E 6138Z	1		1			*	*	Pin. Control Lever,		
EG89	A036 E 6139Z	1		1			*	*	Spring. Pin,		
EG90	A036 E 6140Z	1		1			*	*	Control Lever.		
EG91	A036 E 6141Z	1		1			*	*	Screw. Control Lever,		
EG92	A036 E 6142Z	1		1			*	*	Washer. Spring,		
EG93	A036 E 6143Z	1		1			*	*	Screw. Fixing,		
EG94	A036 E 6144Z	1		1			*	*	Rod.		
EG95	A036 E 6145Z	1		1			*	*	Washer. Plain,		
EG96	A036 E 6146Z	1		1			*	*	Screw. Cable Securing,		
0972.											

PLATE Ref: No.	PART NO.	QUANTITY					STEERING		DESCRIPTION	CHANGE POINT	BULLETIN REF
		ALL	T/C	T/C Fed.	Special	Spec. Fed.	LH	RH			
									<u>DELLORTO CARBURETTER</u>		
EG97	A036 E 6147Z		4		4		*	*	Gasket.		
EG98	A036 E 6148Z		8		8		*	*	Screw. Horn Retaining,		
EG99	A036 E 6149Z		8		8		*	*	Nut.		
EG100	A036 E 6150Z		8		8		*	*	Washer. Spring,		
EG101	A036 E 6151Z		4		4		*	*	Air Horn.		
EG102	A074 E 0464Z		1		1		*	*	Spring. Throttle Return,		
	A036 E 6163		AR		AR		*	*	Gasket Set, comprising:		
									Float Chamber Cover Gasket (1)		
									Needle Valve Gasket (1)		
									Jet Cover Gasket (1)		
									Banjo Union Gasket (1)		
									Banjo Union Plug Gasket (1)		
									Pump Jet Gasket (2)		
									Pump Jet Plug Gasket (2)		
									Idling Air Jet Gasket (2)		
									Pump Body Gasket (1)		
									Carburetter to Manifold Gasket (4)		



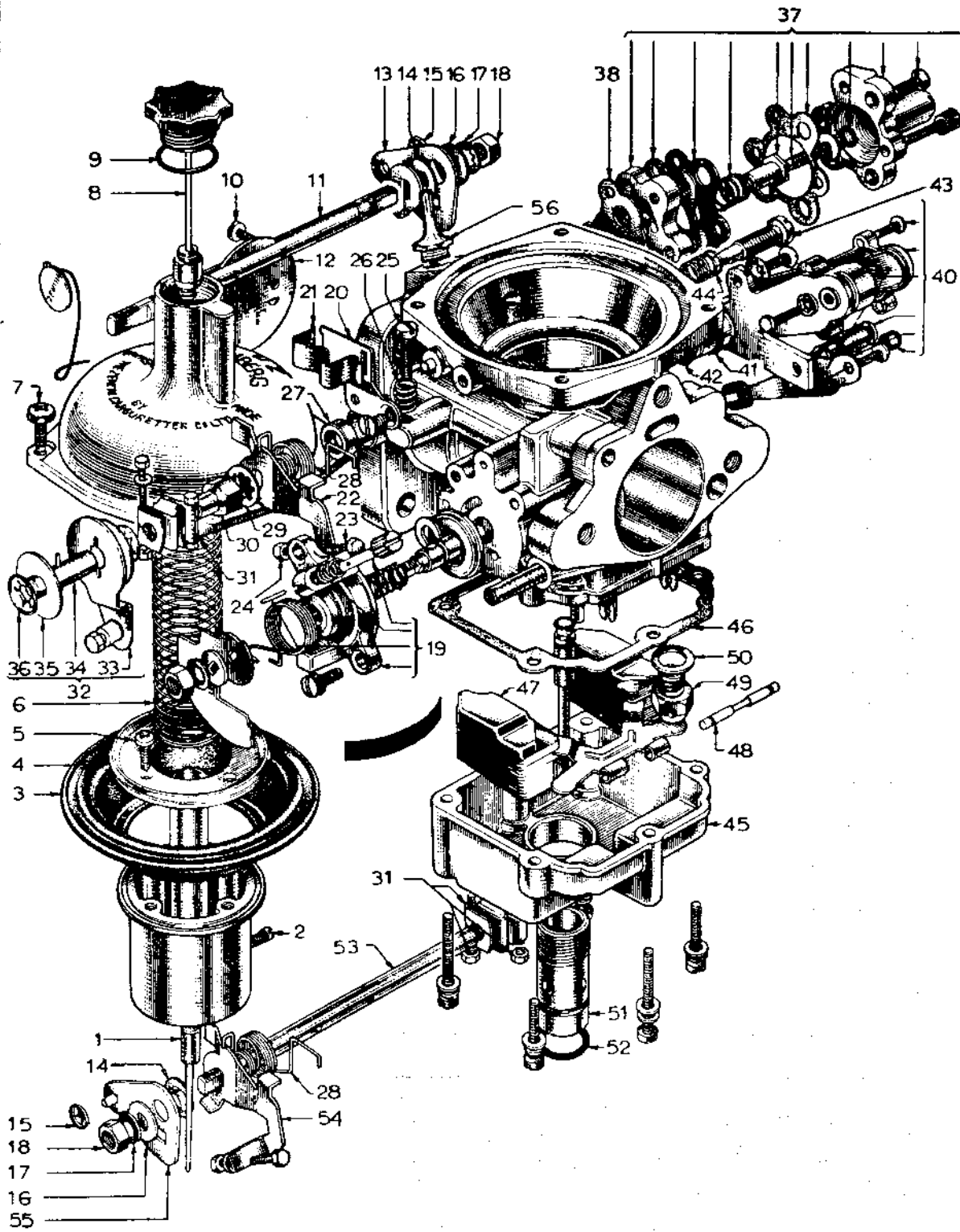


PLATE	PART NO.	QUANTITY					STEERING		DESCRIPTION	CHANGE POINT	BULLETIN REF
		ALL	T/C	T/C Fed.	Special	Spec. Fed.	LH	RH			
	M026 S 0710W			1		1			ZENITH - STROMBERG		
	M026 S 0711W			1		1			Carburetter. Front,		
	M026 S 0711W			1		1			Carburetter. Rear,		
EGF1	A036 S 6173Z			2		2			Needle. Metering, (Non - adjustable-BIG)		
EGF2	A036 S 6023Z			2		2			Screw. Locking,		
EGF3	A036 S 6024Z			2		2			Diaphragm.		
EGF4	A036 S 6025Z			2		2			Retaining Ring.		
EGF5	A036 S 6026Z			8		8			Screw.		
EGF6	A036 S 6191Z			2		2			Spring. Air Valve, (light blue)		
EGF7	A036 S 6029Z			8		8			Screw. Top Retaining, - c/wWasher,		
EGF8	A036 S 6181W			2		2			Damper Assembly.		
EGF9	A036 S 6192Z			2		2			'O' Ring. Damper Assembly,		
EGF10	A036 S 6035Z			4		4			Screw. Throttle Attachment,		
EGF11	A036 S 6036Z			1		1			Throttle Spindle. Front Carb,		
EGF12	A036 S 6037Z			2		2			Throttle.		
EGF13	A036 S 6040Z			1		1			Lever. Floating, Front Carb,		
EGF14	A036 S 6041Z			2		2			Bush.		
EGF15	A036 S 6042Z			2		2			Lockwasher.		
EGF16	A036 S 6043Z			2		2			Washer. Plain,		
EGF17	A036 S 6044Z			2		2			Washer. Shakeproof,		

0972.

EGF1.

PLATE Ref: No.	PART NO.	QUANTITY					STEERING		DESCRIPTION	CHANGE POINT	BULLETIN REF.
		ALL	T/C	T/C Fed.	Special	Spec. Fed.	LH	RH			
									<u>ZENITH - STROMBERG.</u>		
EGF18	A036 S 6045Z			2		2			Nut.		
EGF19	A036 S 6187W			1		1			Starter Assembly. Complete,		
	A036 S 6074Z			2		2			Screw. Attachment,		
	A036 S 6149Z			2		2			Washer. Shakeproof,		
EGF20	A036 S 6052Z			1		1			Bracket. Starter Control, - c/w Clip,		
EGF21	A036 S 6053Z			1		1			Clip.		
	A036 S 6054Z			1		1			Screw. Attachment,		
EGF22	A036 S 6057Z			1		1			Lever. Throttle Stop and Fast Idle, (front carb.)		
EGF23	A036 S 6058Z			1		1			Screw. Fast Idle,		
EGF24	A036 S 6059Z			1		1			Locknut. Fast Idle,		
EGF25	A036 S 6051Z			2		2			Screw. Throttle Stop,		
EGF26	A036 S 6050Z			2		2			Spring.		
EGF27	A036 S 6125Z			4		4			Seal. Throttle Spindle,		
EGF28	A036 S 6056Z			2		2			Spring. Throttle Return,		
EGF29	A036 S 6060Z			1		1			Tabwasher.		
EGF30	A036 S 6061Z			1		1			Nut. Extension,		
EGF31	A036 S 6062Z			2		2			Coupling.		
	A036 S 6157Z			4		4			Screw. Attaching,		
	A036 S 6159Z			4		4			Washer. Attaching,		
	A036 S 6158Z			4		4			Nut. Attaching,		

0972.

EGF2.

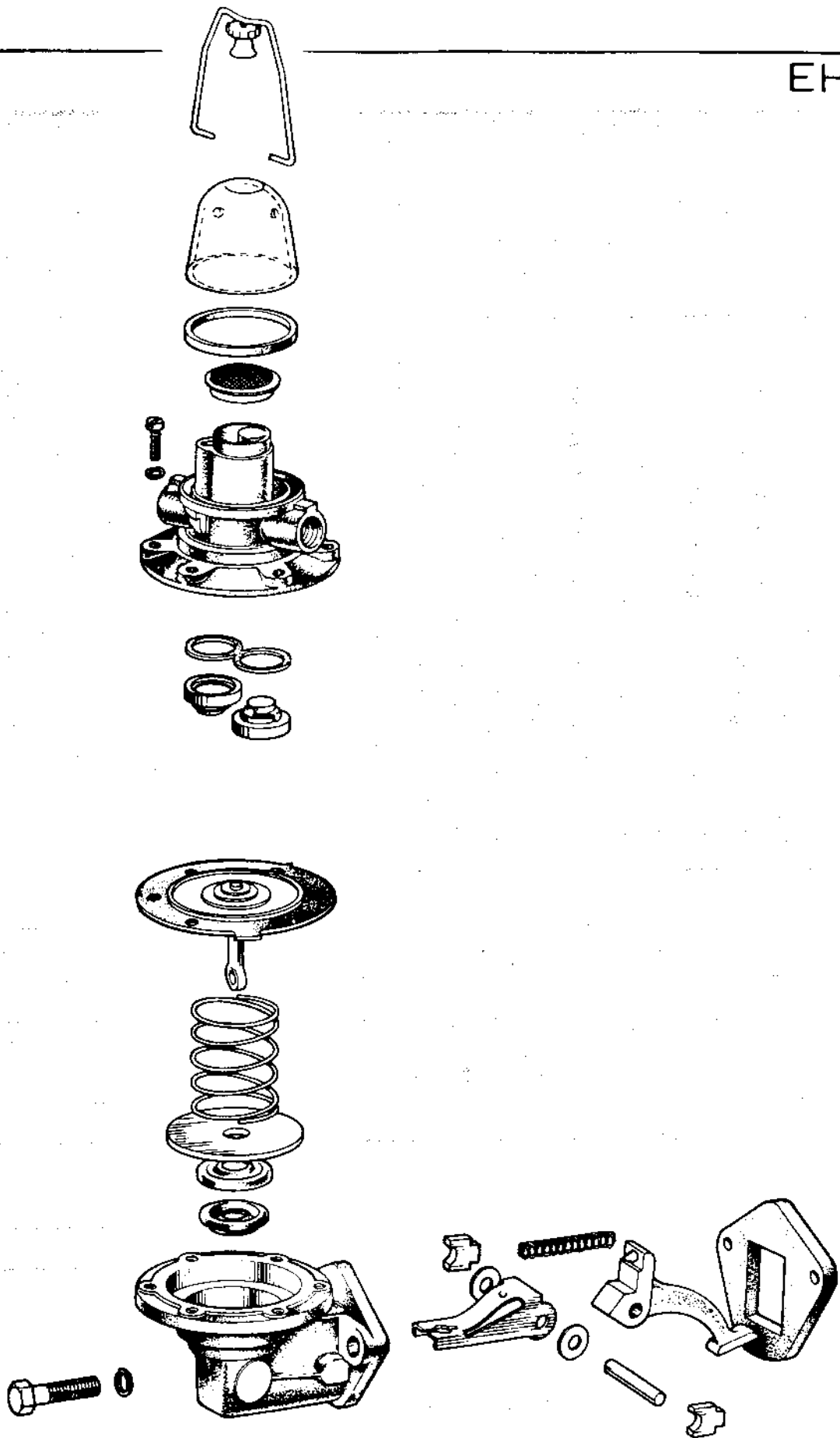
PLATE Ref: No.	PART NO.	QUANTITY					STEERING		DESCRIPTION	CHANGE POINT	BULLETIN REF.
		ALL	T/C	T/C Fed.	Special	Spec. Fed.	LH	RH			
EGF32	A036 S 6068W	1				1			Assembly. Coupling Spindle and Throttle Lever, comprising: Lever. Throttle, Spindle. Coupling, Washer, Washer. Starlock, Valve. By-Pass, Gasket. Screw. Attaching, - c/w Washer, Temperature Compensator Assembly. Seal. Seal. Screw. Attaching, Washer. Shakeproof, Screw. Trimmer, Spring. Floatchamber. Screw. Attaching, (long)- c/w Washer, Screw. Attaching, (short)- c/w Washer, Gasket. Float and Arm Assembly. Pivot.		
EGF33	A036 S 6063Z	1				1					
EGF34	A036 S 6065Z	1				1					
EGF35	A036 S 6066Z	2				2					
EGF36	A036 S 6067Z	2				2					
EGF37	A036 S 6185W	1				1					
EGF38	A907 E 6139Z	1				1					
	A036 S 6087Z	3				3					
EGF40	A036 S 6186W	2				2					
EGF41	A036 S 6123Z	2				2					
EGF42	A036 S 6124Z	2				2					
	A036 S 6122Z	4				4					
	A036 S 6141Z	4				4					
EGF43	A036 S 6113Z	2				2					
EGF44	A036 S 6114Z	2				2					
EGF45	A036 S 6086X	2				2					
	A036 S 6088Z	8				8					
	A036 S 6087Z	4				4					
EGF46	A036 S 6082Z	2				2					
EGF47	A907 E 6141Z	2				2					
EGF48	A036 S 6085Z	2				2					

0972.

EGF3.

PLATE Ref: No.	PART NO.	QUANTITY					STEERING		DESCRIPTION	CHANGE POINT	BULLETIN REF
		ALL	T/C	T/C Fed.	Special	Spec. Fed.	LH	RH			
EGF49	A036 S 6130Z		2			2			Valve. Needle,		
EGF50	A036 S 6083Z		2			2			Washer. Needle Valve,		
EGF51	A907 E 6147Z		2			2			Plug. Floatchamber, - c/w 'O' Ring,		
EGF52	A036 S 6090Z		2			2			'O' Ring.		
EGF53	A036 S 6188Z		1			1			Throttle Spindle. Rear Carb.,		
EGF54	A036 S 6189Z		1			1			Lever. Throttle Stop and Fast Idle. (rear carb.)		
EGF55	A036 S 6190Z		1			1			Lever. Floating, (rear carb.)		
EGF56	A907 E 6130Z		2			2			Adaptor. Ignition,		
	A036 S 6162Z		AR			AR			Gasket Set. 12,000 miles, (20,000 km.)		
	A036 S 6163Z		AR			AR			Gasket Set. 24,000 miles, (40,000 km.)		
	A036 S 6164Z		AR			AR			Gasket Set. Carburetters to Engine,		

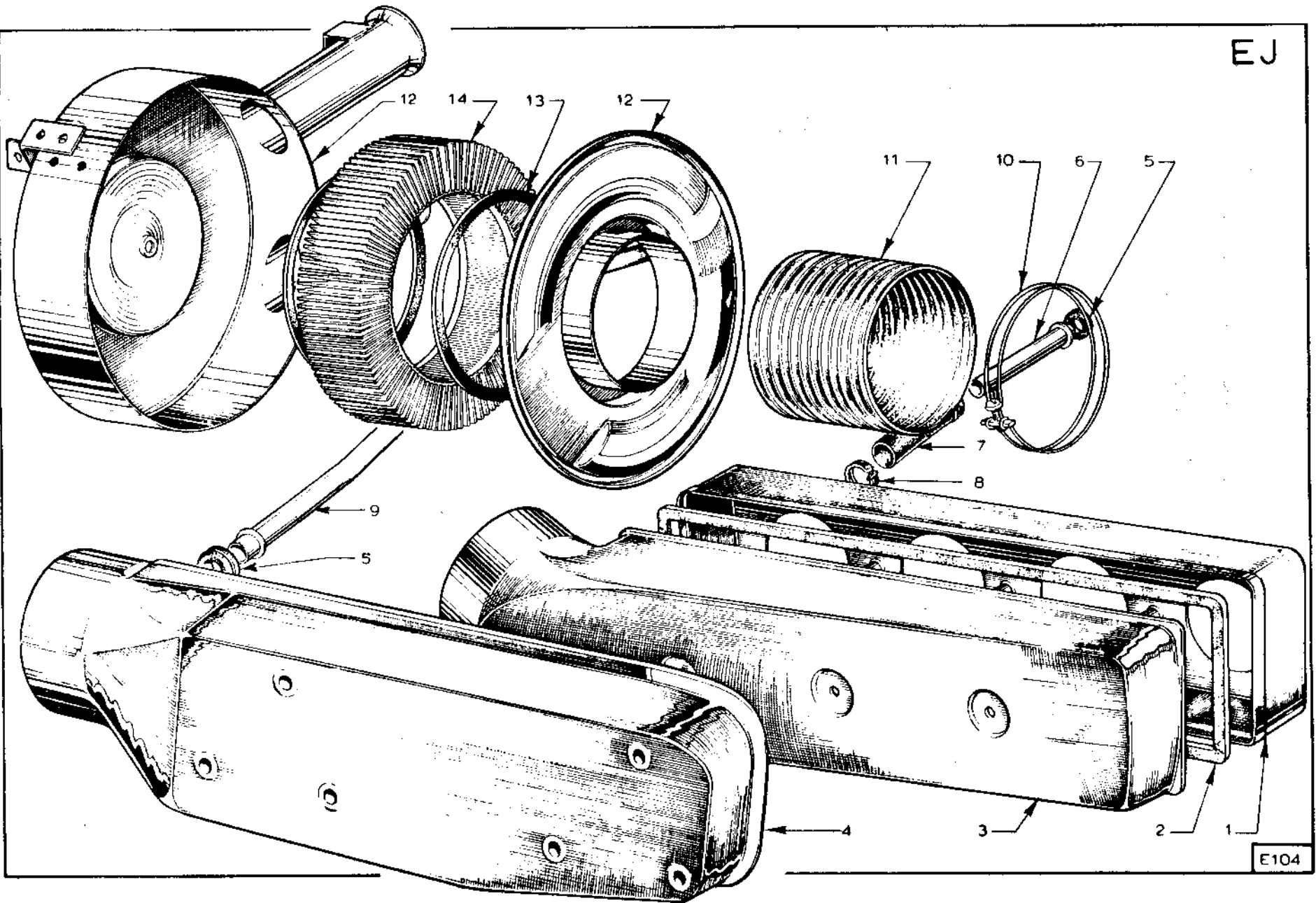
EH



E 103

PLATE Ref: No.	PART NO.	QUANTITY						STEERING		DESCRIPTION	CHANGE POINT	BULLETIN REF.
		ALL	T/C	T/C Fed.	Special	Spec. Fed.	LH	RH				
EH	X026 E 0370W	1								Assembly. Fuel Pump.		

EJ

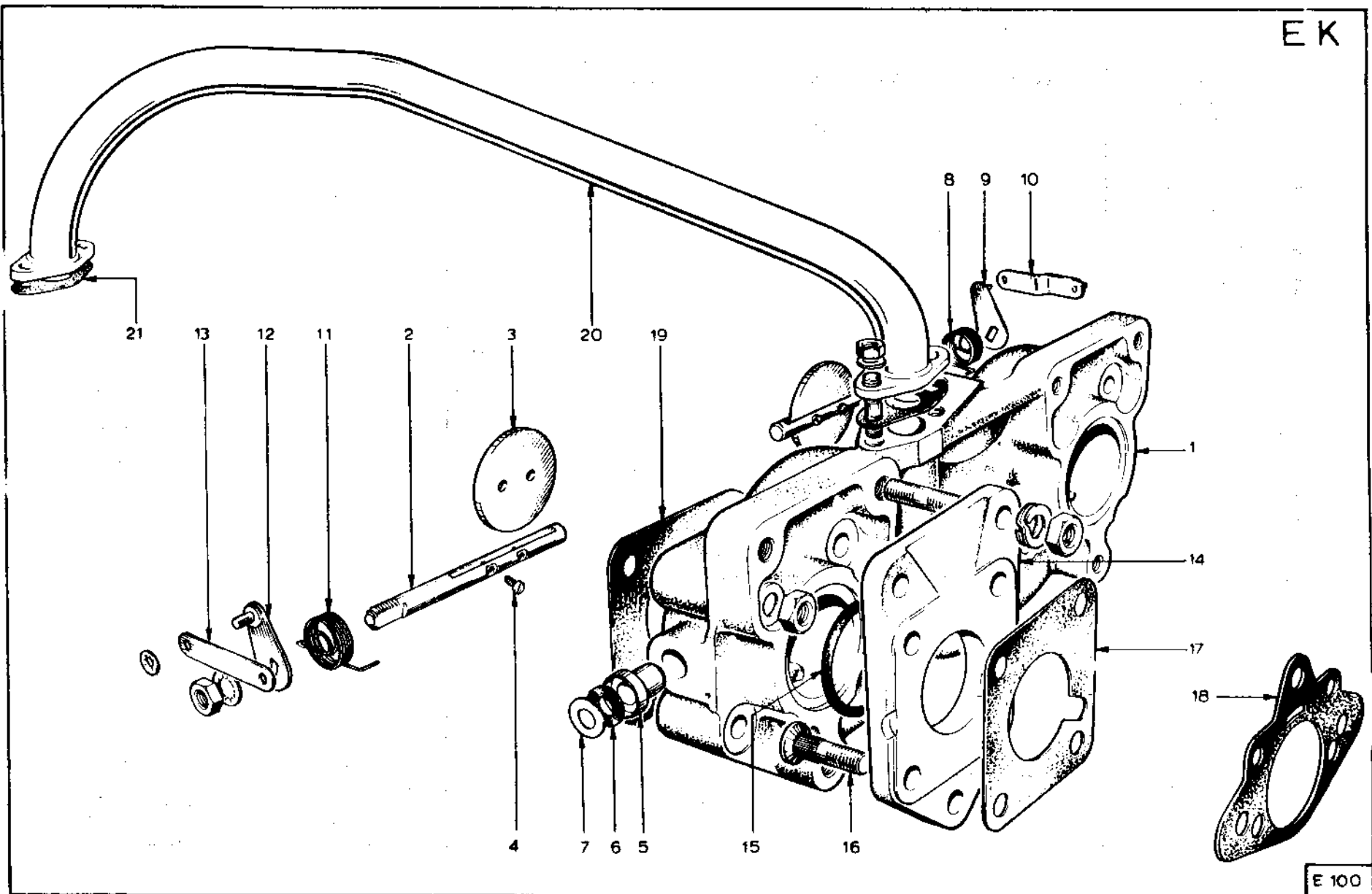


E104





EK



E 100

PLATE	PART NO.	QUANTITY					STEERING		DESCRIPTION	CHANGE POINT	BULLETIN REF.
		ALL	T/C	T/C Fed.	Special	Spec. Fed.	LH	RH			
	X026 S 0109W			1		1			Assembly. Secondary Throttle comprising: Body. Secondary Throttle, Spindle. Plate. Throttle, Screw. Plate Securing, Bush. Spindle, Seal. Retainer. Seal, Spring. Return, (front) Lever. Throttle, (front) Nut. Securing, Washer. Shakeproof, Link. Coupling (front) Washer. Starlock, Spring. Return (rear) Lever. Throttle, (rear) Nut. Securing, Washer. Shakeproof, Link. Coupling, (rear) Washer. Starlock,		
EK1	X026 S 0110Y			1		1					
EK2	X026 S 0117Z			2		2					
EK3	X026 S 0118Z			2		2					
EK4	X036 S 6008Z			4		4					
EK5	X026 S 0121Z			2		2					
EK6	X026 S 0123Z			2		2					
EK7	X026 S 0122Z			2		2					
EK8	X026 S 0119Z			1		1					
EK9	X026 S 0124Z			1		1					
	X036 S 6009Z			1		1					
	X036 S 6010Z			1		1					
EK10	X036 S 6038Z			1		1					
	X036 S 6042Z			1		1					
EK11	X026 S 0120Z			1		1					
EK12	X026 S 0125Z			1		1					
	X036 S 6009Z			1		1					
	X036 S 6010Z			1		1					
EK13	X026 S 0126Z			1		1					
	X036 S 6042Z			1		1					

0972.

EK1.

PLATE Ref: No.	PART NO.	QUANTITY					STEERING		DESCRIPTION	CHANGE POINT	BULLETIN REF.
		ALL	T/C	T/C Fed.	Special	Spec. Fed.	LH	RH			
	A036 S 0173Z			4		4			Stud. Crossover Pipe,		
EK14	A026 S 0009A			2		2			Flange. Adaptor,		
EK15	B026 S 0086A			2		2			'O' Ring		
	A036 S 0172Z			6		6			Stud, Flange to Throttle Body,		
	116B			6		6			Washer. Thackery, (replaced by A036 E 0806W)		
	A036 E 0806W			6		6			Assembly. Rubber Ring,		
	118			12		12			Washer. Plain,		
	211			6		6			Nut		
EK16	46			8		8			Stud. Flange to Carburetter,		
	211			8		8			Nut		
EK17	X026 S 0107Z			2		2			Gasket. Flange to Carburetter,		
EK18	X026 S 0106Z			2		2			Gasket. Carburetter to Airbox,		
EK19	X026 S 0108Z			2		2			Gasket. Throttle Body to Cylinder Head,		
EK20	X026 S 0111Z			2		2			Pipe. Cross-over,		
	X026 S 0114Z			4		4			Gasket. Cross-over Pipe,		
	A036 S 0173Z			4		4			Stud. Pipe to Exhaust Manifold,		
	205D			8		8			Nut. Cross-over Pipe Securing,		
	110			8		8			Washer. Plain,		